



Report No.: STL2022R04270156C-Y1

RoHS TEST REPORT

Prepared for :

Dongguan Mingke Acoustics Technology Co.,Ltd.

Building A, No. 2 Lilian Road, TangXia Town, DongGuan City, China

Product: Wired Earphone

Brand Name: N/A

**Model Name: MK-XC-3GS, MK-ZB-3GS, MK-S6-A4,
MK-I4-I5-3GS, MK-I5-I5, MK-K14-HK15-CA,
MK-I5DD-3GS, MK-A15-0238,
MK-A6-I5, MK-A3-I5-I7, MK-TC-03**

Date of Test: Apr. 18, 2022 – Apr 25, 2022

Date of Report: Apr. 27, 2022

Report Number: STL2022R04270156C-Y1

Prepared By :

Shenzhen STL Testing Technology Co., Ltd.



TEST RESULT CERTIFICATION

Applicant : Dongguan Mingke Acoustics Technology Co.,Ltd.
Address : Building A, No. 2 Lilian Road, TangXia Town, DongGuan City, China
Manufacturer : Dongguan Mingke Acoustics Technology Co.,Ltd.
Address : Building A, No. 2 Lilian Road, TangXia Town, DongGuan City, China
Product Name : Wired Earphone
Product Model : MK-XC-3GS, MK-ZB-3GS, MK-S6-A4, MK-I4-I5-3GS,
MK-I5-I5, MK-K14-HK15-CA, MK-I5DD-3GS,
MK-A15-0238, MK-A6-I5, MK-A3-I5-I7, MK-TC-03
Brand Name : N/A
Date of Sample Received : Apr. 18, 2022
Testing Period : Apr. 18, 2022 – Apr 27, 2022

Test Requested:

Based on the verification results of the submitted samples, the results of Lead, Mercury, Cadmium, Hexavalent chromium, Polybrominated biphenyls (PBBs), Polybrominated diphenyl ethers (PBDEs) do not exceed the limits as set by RoHS. Directive 2015/863/EU amending Annex II to Directive 2011/65/EU.

Conclusion

PASS

Prepared by:

Eris

Project Engineer

Checked By:

Lewis

Project Supervisor

Approved by:



Technical Director



**** Modified History ****

Revision	Description	Issued Data	Remark
Revision 1.0	Initial Test Report Release	2022/04/27	

Test Method:

Heavy Metals and Flame Retardants Content – European Council Directive 2011/65/EU on the Restriction of the Use of Certain Hazardous Substances in Electrical and Electronic Equipment (RoHS)

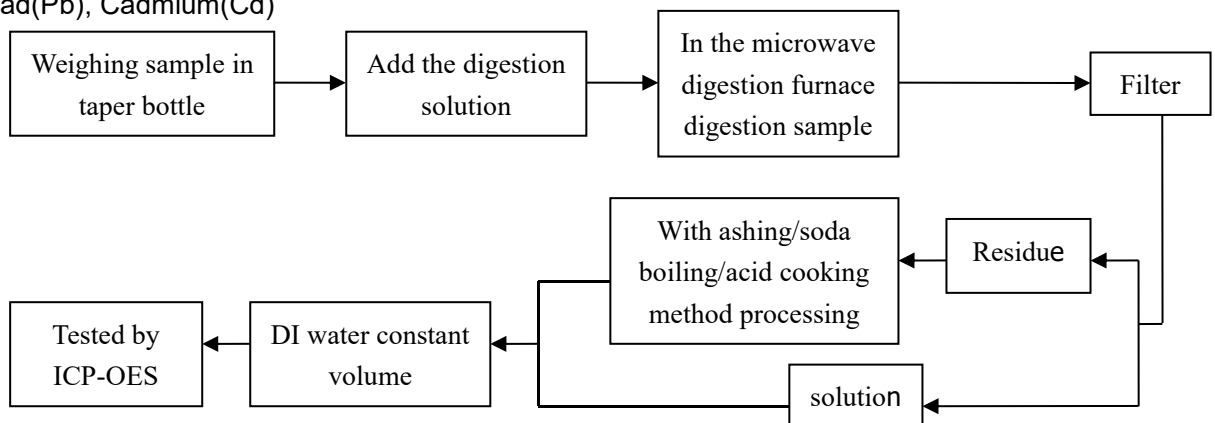
Testing item	Pretreatment method	Measuring instrument	MDL
Lead(Pb)	EN 62321-5:2014 EN 62321-4:2014	ICP-AES	2 mg/kg
Cadmium(Cd)			
Mercury(Hg)			
Chromium(Cr VI)	EN 62321-7-1:2015 EN 62321-7-2:2017 ISO17075-1:2017	UV-Vis	2 mg/kg
PBBs/ PBDEs	IEC 62321-6:2015	GC-MS	5 mg/kg

Phthalates content – European Council Directive 2011/65/EU and Change-Directive 2015/863/EU on the Restriction of the Use of Certain Hazardous Substances in Electrical and Electronic Equipment (RoHS) Test Method: Sample was extracted with organic solvent and then analyzed by Gas Chromatograph Mass Spectrometer.

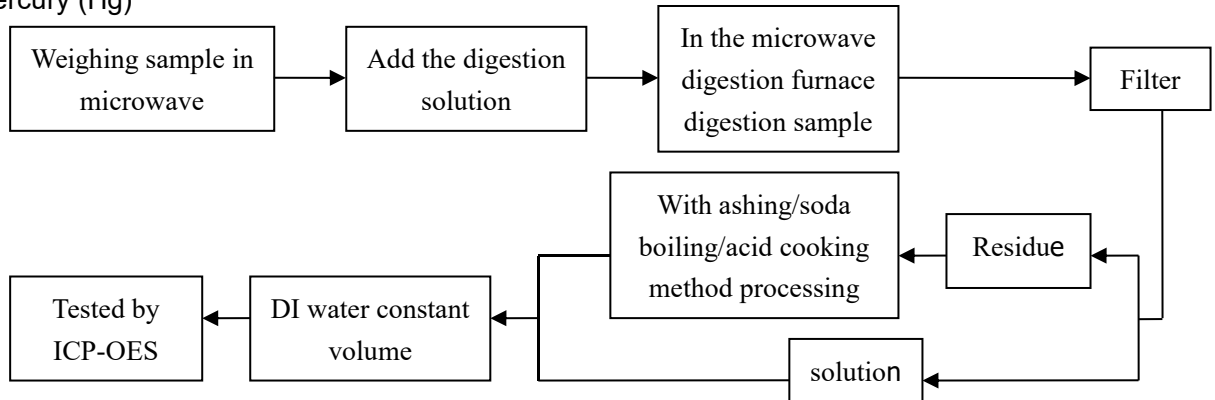
Testing item	Pretreatment method	Measuring instrument	MDL
DEHP/DBP/BBP/ DIBP	IEC 62321-8:2017	GC-MS	0.003 mg/kg

Test Flow:

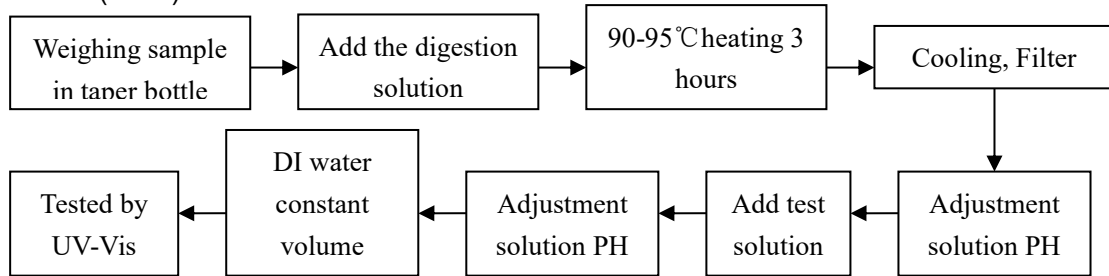
1. Lead(Pb), Cadmium(Cd)



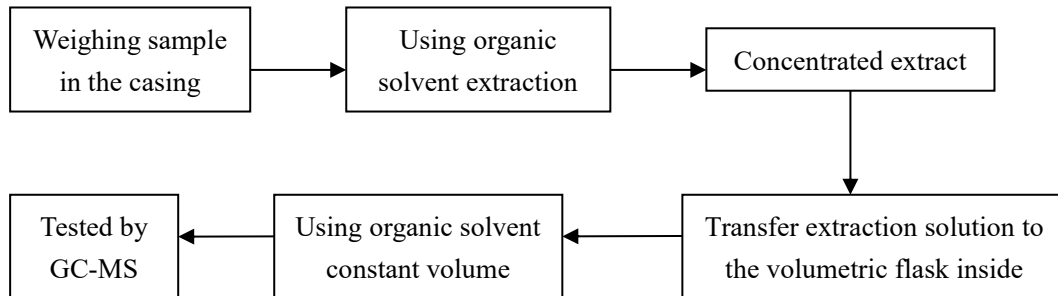
2. Mercury (Hg)



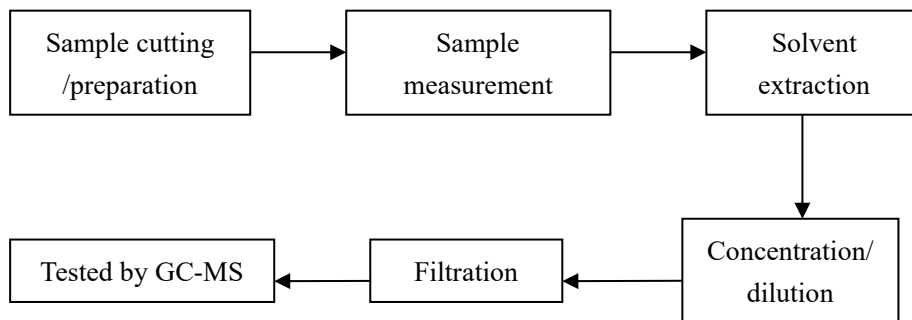
3. Chromium(Cr VI)



4. PBBs/ PBDEs



5. DEHP/ BBP/ DBP/ DIBP



**Test Results:**

Testing Item	Unit	ROHS Limit	Result					
			1	2	3	4	5	6
Lead(Pb)	mg/kg	1000	N.D.	N.D.	N.D.	N.D.	N.D.	N.D.
Cadmium(Cd)	mg/kg	100	N.D.	N.D.	N.D.	N.D.	N.D.	N.D.
Mercury(Hg)	mg/kg	1000	N.D.	N.D.	N.D.	N.D.	N.D.	N.D.
Chromium(Cr VI)	mg/kg	1000	N.D.	N.D.	N.D.	N.D.	N.D.	N.D.
Sum of PBBs/ PBDEs	mg/kg	1000	N.D.	N.D.	N.D.	N.D.	N.D.	N.D.
Monobromobiphenyl	mg/kg	/	N.D.	N.D.	N.D.	N.D.	N.D.	N.D.
Dibromobiphenyl	mg/kg	/	N.D.	N.D.	N.D.	N.D.	N.D.	N.D.
Tribromobiphenyl	mg/kg	/	N.D.	N.D.	N.D.	N.D.	N.D.	N.D.
Tetrabromobiphenyl	mg/kg	/	N.D.	N.D.	N.D.	N.D.	N.D.	N.D.
Pentabromobiphenyl	mg/kg	/	N.D.	N.D.	N.D.	N.D.	N.D.	N.D.
Hexabromobiphenyl	mg/kg	/	N.D.	N.D.	N.D.	N.D.	N.D.	N.D.
Heptabromobiphenyl	mg/kg	/	N.D.	N.D.	N.D.	N.D.	N.D.	N.D.
Octabromobiphenyl	mg/kg	/	N.D.	N.D.	N.D.	N.D.	N.D.	N.D.
Nonabromobiphenyl	mg/kg	/	N.D.	N.D.	N.D.	N.D.	N.D.	N.D.
Decabromobiphenyl	mg/kg	/	N.D.	N.D.	N.D.	N.D.	N.D.	N.D.
Monobromodiphenyl ether	mg/kg	/	N.D.	N.D.	N.D.	N.D.	N.D.	N.D.
Dibromodiphenyl ether	mg/kg	/	N.D.	N.D.	N.D.	N.D.	N.D.	N.D.
Tribromodiphenyl ether	mg/kg	/	N.D.	N.D.	N.D.	N.D.	N.D.	N.D.
Tetrabromodiphenyl ether	mg/kg	/	N.D.	N.D.	N.D.	N.D.	N.D.	N.D.
Pentabromodiphenyl ether	mg/kg	/	N.D.	N.D.	N.D.	N.D.	N.D.	N.D.
Hexabromodiphenyl ether	mg/kg	/	N.D.	N.D.	N.D.	N.D.	N.D.	N.D.
Heptabromodiphenyl ether	mg/kg	/	N.D.	N.D.	N.D.	N.D.	N.D.	N.D.
Octabromodiphenyl ether	mg/kg	/	N.D.	N.D.	N.D.	N.D.	N.D.	N.D.
Nonabromodiphenyl ether	mg/kg	/	N.D.	N.D.	N.D.	N.D.	N.D.	N.D.
Decabromodiphenyl ether	mg/kg	/	N.D.	N.D.	N.D.	N.D.	N.D.	N.D.
Bis-(2-ethylhexyl) Phthalate (DEHP)	mg/kg	1000	N.D.	N.D.	N.D.	N.D.	N.D.	N.D.
Benzylbutyl Phthalate (BBP)	mg/kg	1000	N.D.	N.D.	N.D.	N.D.	N.D.	N.D.
Dibutyl Phthalate (DBP)	mg/kg	1000	N.D.	N.D.	N.D.	N.D.	N.D.	N.D.
Di-isobutyl phthalate (DIBP)	mg/kg	1000	N.D.	N.D.	N.D.	N.D.	N.D.	N.D.

Sample Description:

- 1 Plus or minus volume button
- 2 USB interface
- 3 Plastic shell
- 4 Indicator light
- 5 PCB
- 6 Tin solder



Testing Item	Unit	ROHS Limit	Result					
			7	8	9	10	11	12
Lead(Pb)	mg/kg	1000	N.D.	N.D.	N.D.	N.D.	N.D.	N.D.
Cadmium(Cd)	mg/kg	100	N.D.	N.D.	N.D.	N.D.	N.D.	N.D.
Mercury(Hg)	mg/kg	1000	N.D.	N.D.	N.D.	N.D.	N.D.	N.D.
Chromium(Cr VI)	mg/kg	1000	N.D.	N.D.	N.D.	N.D.	N.D.	N.D.
Sum of PBBs/ PBDEs	mg/kg	1000	N.D.	N.D.	N.D.	N.D.	N.D.	N.D.
Monobromobiphenyl	mg/kg	/	N.D.	N.D.	N.D.	N.D.	N.D.	N.D.
Dibromobiphenyl	mg/kg	/	N.D.	N.D.	N.D.	N.D.	N.D.	N.D.
Tribromobiphenyl	mg/kg	/	N.D.	N.D.	N.D.	N.D.	N.D.	N.D.
Tetrabromobiphenyl	mg/kg	/	N.D.	N.D.	N.D.	N.D.	N.D.	N.D.
Pentabromobiphenyl	mg/kg	/	N.D.	N.D.	N.D.	N.D.	N.D.	N.D.
Hexabromobiphenyl	mg/kg	/	N.D.	N.D.	N.D.	N.D.	N.D.	N.D.
Heptabromobiphenyl	mg/kg	/	N.D.	N.D.	N.D.	N.D.	N.D.	N.D.
Octabromobiphenyl	mg/kg	/	N.D.	N.D.	N.D.	N.D.	N.D.	N.D.
Nonabromobiphenyl	mg/kg	/	N.D.	N.D.	N.D.	N.D.	N.D.	N.D.
Decabromobiphenyl	mg/kg	/	N.D.	N.D.	N.D.	N.D.	N.D.	N.D.
Monobromodiphenyl ether	mg/kg	/	N.D.	N.D.	N.D.	N.D.	N.D.	N.D.
Dibromodiphenyl ether	mg/kg	/	N.D.	N.D.	N.D.	N.D.	N.D.	N.D.
Tribromodiphenyl ether	mg/kg	/	N.D.	N.D.	N.D.	N.D.	N.D.	N.D.
Tetrabromodiphenyl ether	mg/kg	/	N.D.	N.D.	N.D.	N.D.	N.D.	N.D.
Pentabromodiphenyl ether	mg/kg	/	N.D.	N.D.	N.D.	N.D.	N.D.	N.D.
Hexabromodiphenyl ether	mg/kg	/	N.D.	N.D.	N.D.	N.D.	N.D.	N.D.
Heptabromodiphenyl ether	mg/kg	/	N.D.	N.D.	N.D.	N.D.	N.D.	N.D.
Octabromodiphenyl ether	mg/kg	/	N.D.	N.D.	N.D.	N.D.	N.D.	N.D.
Nonabromodiphenyl ether	mg/kg	/	N.D.	N.D.	N.D.	N.D.	N.D.	N.D.
Decabromodiphenyl ether	mg/kg	/	N.D.	N.D.	N.D.	N.D.	N.D.	N.D.
Bis-(2-ethylhexyl) Phthalate (DEHP)	mg/kg	1000	N.D.	N.D.	N.D.	N.D.	N.D.	N.D.
Benzylbutyl Phthalate (BBP)	mg/kg	1000	N.D.	N.D.	N.D.	N.D.	N.D.	N.D.
Dibutyl Phthalate (DBP)	mg/kg	1000	N.D.	N.D.	N.D.	N.D.	N.D.	N.D.
Di-isobutyl phthalate (DIBP)	mg/kg	1000	N.D.	N.D.	N.D.	N.D.	N.D.	N.D.

Sample Description:

- 7 Pause / play key
- 8 Speaker
- 9 Dust net
- 10 Wireway
- 11 C1
- 12 L2



Notes:

1mg/kg=1ppm = 0.0001%

N.D. = Not Detected (<MDL)

MDL = Method Detection Limit

/=Not Regulated

---=Not Applicable

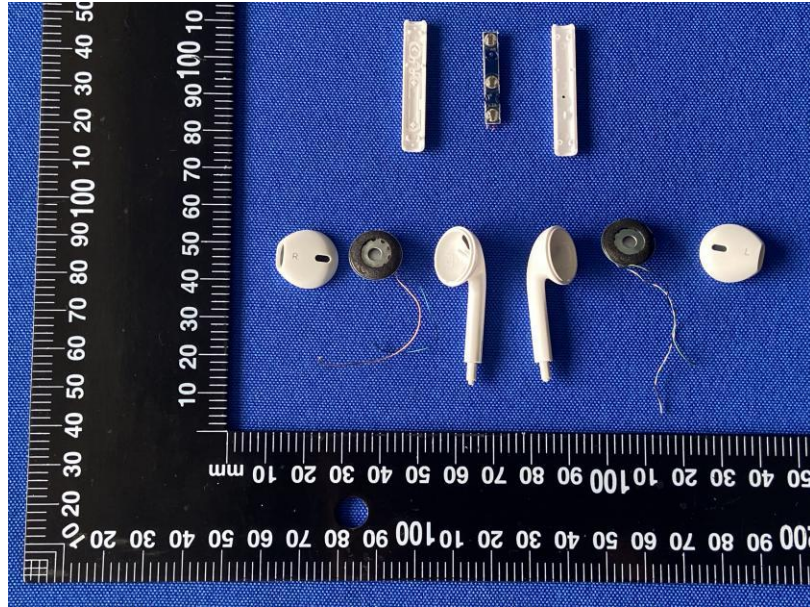
Sample photo: 1



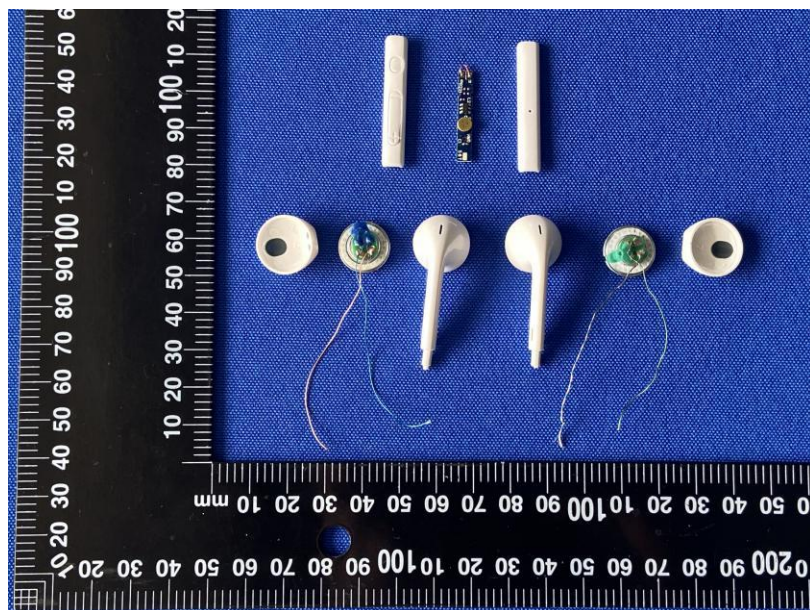
Sample photo: 2



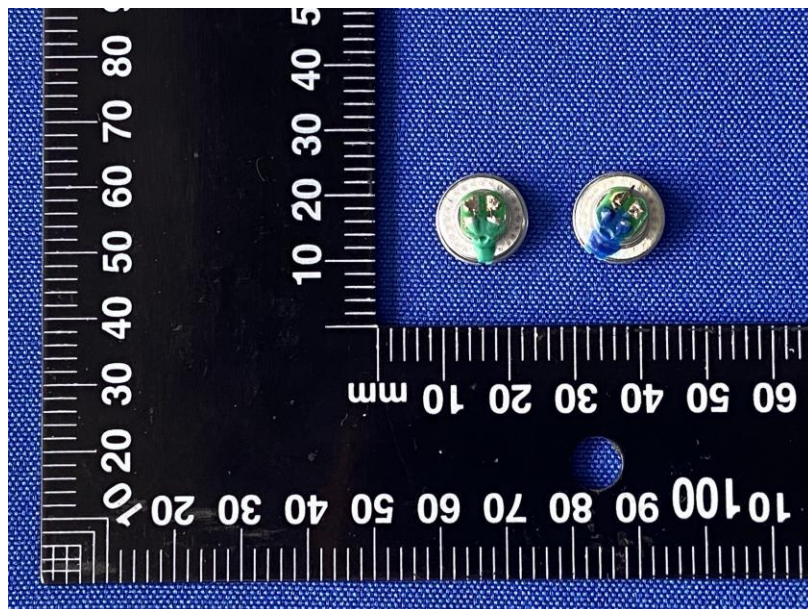
Sample photo: 3



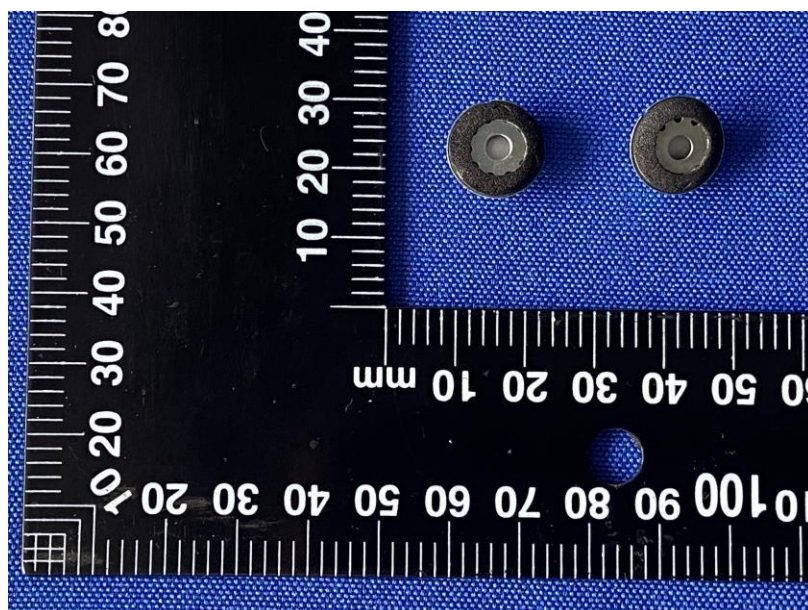
Sample photo: 4



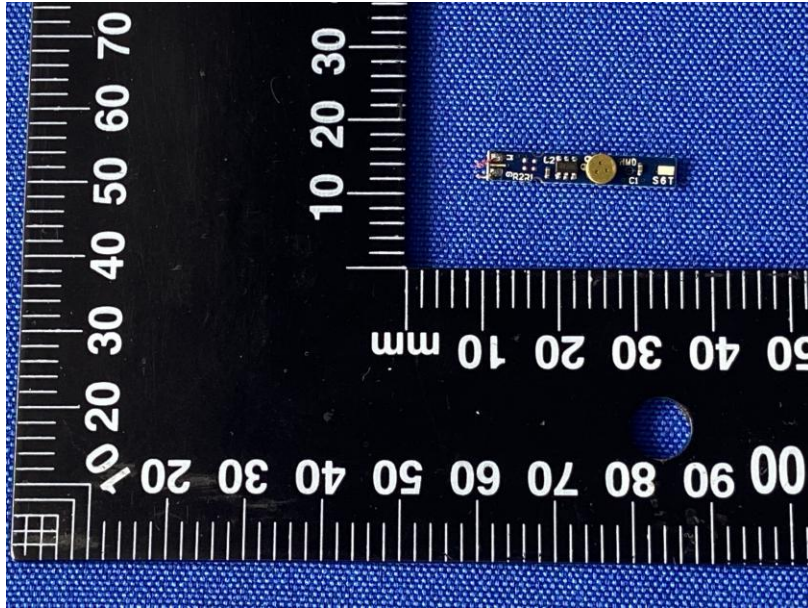
Sample photo: 5



Sample photo: 6



Sample photo: 7



Sample photo: 8

